

Alaska Department of Fish and Game

Habitat Section
Southeast Region



186-15-10550-2005-3002-4012 Tributary 2

ADDITION

Water body name:

Survey date: 8/20/2024

Quad: Icy Bay D2, D3

Species & Lifestage:

Upper Reach Latitude: 59.987016 **Longitude:** -141.524171

Survey crew: NJ, CD, FC

Lower Reach Latitude: 59.986499 **Longitude:** -141.524120

Findings: We surveyed this uncataloged stream using a backpack electrofisher and GPS and captured juvenile coho salmon. The stream crosses underneath the road via 24 inch smooth wall pipe; inlet of pipe is likely covered by debris but still allowing some water flow. Ditch stream connects to this pipe above the road (Table 1; Figures 1–3).

Recommendations: Add this uncataloged stream to the anadromous waters catalog for rearing coho salmon (Figure 4).

Nomination: Pending

Table 1.–186-15-10550-2005-3002-4012 tributary 2 survey data.

Waypoint	Latitude	Longitude	Notes	Stream Width ft	Stream Substrate	Habitat Features	Gradient %	Sample Effort	Sample Results
1044	59.986956	-141.524153	24 inch smooth wall pipe with little flow at outlet. Inlet of pipe cannot be found, but is likely covered by sediment, buildup or woody debris, but still allows a small amount of water flow through the pipe. Extend the ditch to the next channel.		Small Gravel		1-2	VI	3 CO
1045	59.986809	-141.524067	Downstream of pipe water becomes intermittent but coho caught in pool that has more water. Where coho were caught another small tributary enters the channel, which is likely why there seems to be more water from this point downstream.		Sand Small Gravel		1-2	EF	5 CO



Figure 1.–Juvenile coho salmon caught at waypoint 1045.



Figure 2.—Ditch upstream at waypoint 1044.



Figure 3.—Looking downstream at waypoint 1045.

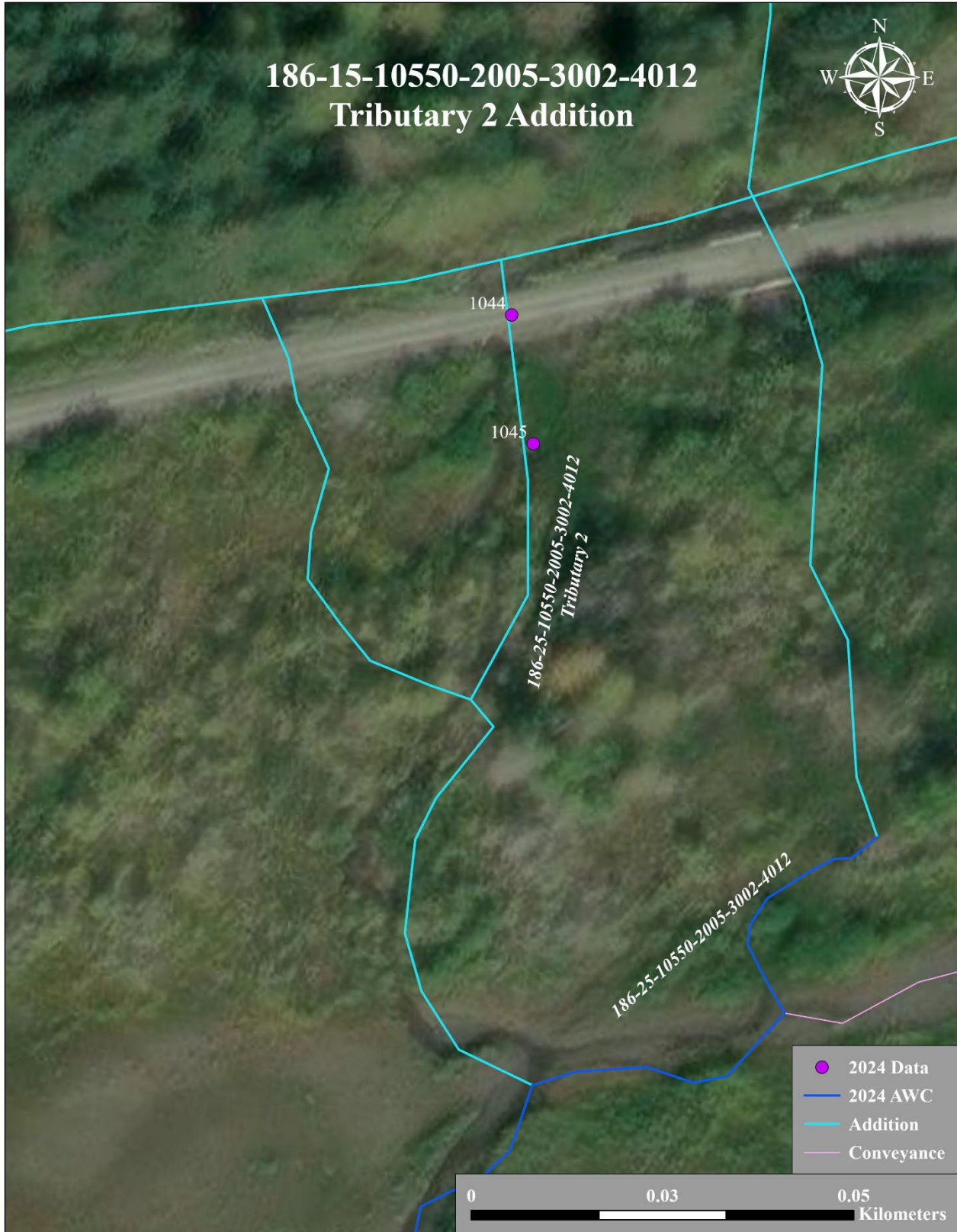


Figure 4.—186-15-10550-2005-3002-4012 tributary 2 addition map.